

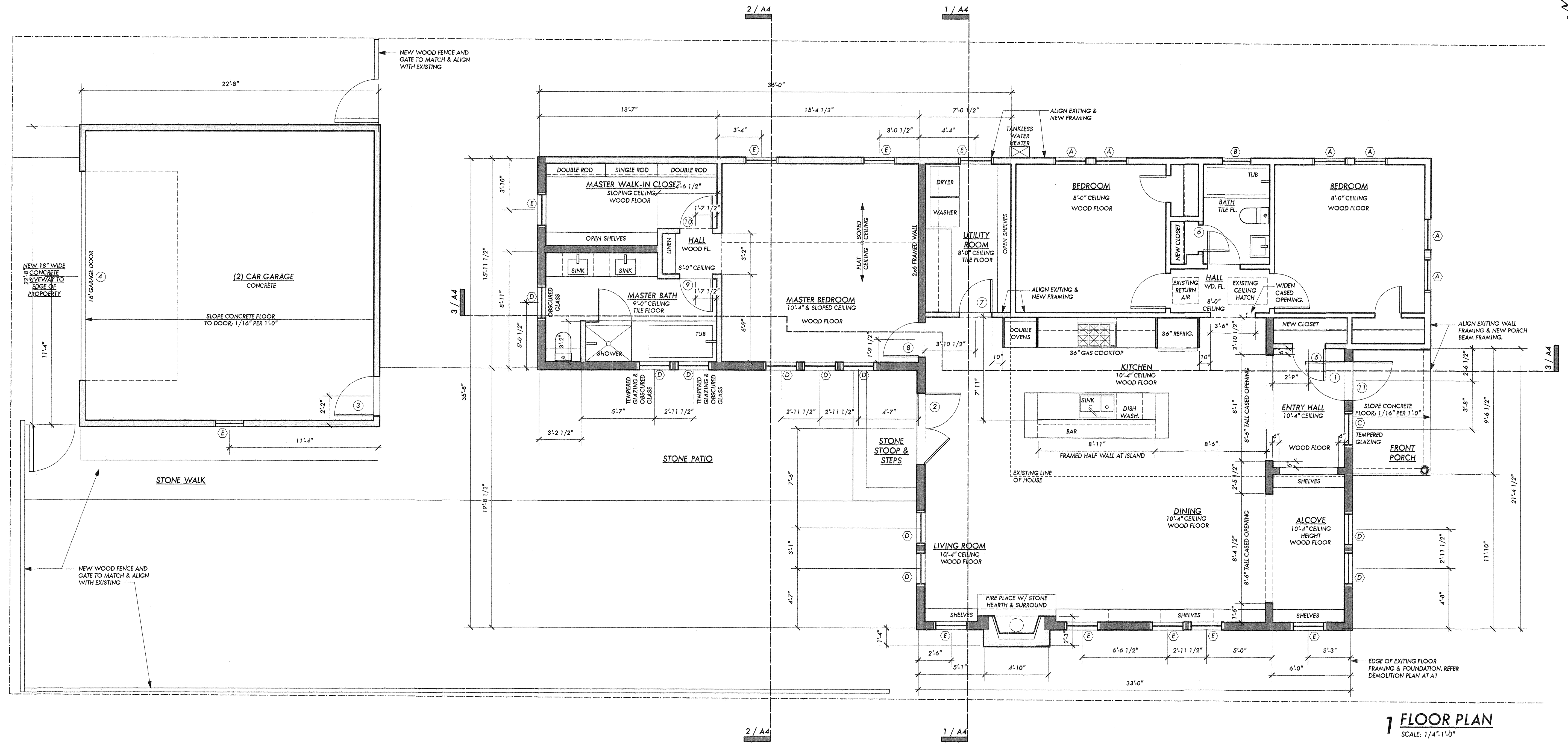
NICK MEHL

ARCHITECTURE

BEHRENDT ADDITION & REMODEL
1816 WEST 37TH STREET, AUSTIN, TEXAS 78731

DATE: 2-2-12
2-8-12
2-10-12
2-24-12
7-31-12

A2



1 FLOOR PLAN
SCALE: 1/4"=1'-0"

DOOR SCHEDULE				
DOOR NO.	Unit Size		DOOR SPECIFICATION	HARDWARE SPECIFICATION
	width	height		
1	3'-0"	8'-6" Rough Opening	BUFFELEN 108 Exterior Door & 1705 Transom, SELECT FIR, 3'-0" Wide x 6'-8" Tall Door with 3'-0" wide x +/-1'-10" Tall Transom. (1) Lights at Door, (1) Lights of Transom. STAINED EXTERIOR & INTERIOR. Clear, Insulated Glass, 6 9/16" Jamb, Bronze Finish of Threshold.	
2	5'-4" (2) 2'-8"	8'-6" Rough Opening	BUFFELEN 5001 Exterior Double Door & 1705 Transom, SELECT FIR, (2) 2'-8" Wide x 6'-8" Tall Doors & (1) 5'-4" wide x +/-1'-10" Tall Transom. (1) Lights at Door, (1) Lights of Transom. STAINED EXTERIOR & INTERIOR. Clear, Insulated Glass, 6 9/16" Jamb, Bronze Finish of Threshold.	
3	3'-0"	6'-8"	THERMA-TRU Classic Craft American 'CCA220' Fiberglass Exterior Door. (1) Upper CLEAR Lites, (2) Lower Panels.	
4	16'-0"	7'-0"	Painted Metal Garage Door	
5	2'-6"	6'-8"	WOODGRAIN '20', Pre-Hung, Paint Grade, Interior Door. 4 9/16" Jamb.	
6	2'-0"	6'-8"	WOODGRAIN '20', Pre-Hung, Paint Grade, Interior Door. 4 9/16" Jamb.	
7	2'-6"	6'-8"	WOODGRAIN '20', Pre-Hung, Paint Grade, Interior Door. 4 9/16" Jamb.	
8	2'-8"	8'-6"	WOODGRAIN '20', Pre-Hung, Paint Grade, Interior Door w/ 1'-10" Tall, (1) Lite Transom, 6 9/16" Jamb.	
9	2'-6"	6'-8"	WOODGRAIN '20', Pre-Hung, Paint Grade, Interior Door. 4 9/16" Jamb.	
10	2'-6"	6'-8"	WOODGRAIN '20', Pre-Hung, Paint Grade, Interior Door. 4 9/16" Jamb.	
11	3'-0"	6'-8"	FRONT SCREEN DOOR	

GENERAL WINDOW NOTES:
1. Install all Door units as per manufacturer's specifications.
2. All exterior doors to have 6 1/2" jamb for 2x6 exterior framed walls.
3. All Door hardware to be OIL RUBBED BRONZE.
4. Refer individual Door Specification above for Painted or Stained FINISH.

MARVIN 'INTEGRITY' WINDOW SCHEDULE					
Window Desig.	Window Description	Window Size (R.O.)		Number of Units	Remarks
		width	height		
A	Double Hung Window; WOOD ULTREX, ITDH3264	2'-8 1/2"	5'-4 1/2"	6	Egrees Window, Clear Glass & Single Lites. 4 9/16" JAMBS.
B	Awning Window; ALL ULTREX, IFAWN2626	2'-6"	2'-6"	1	Tempered & Obscured Glass, Single Lite. 4 9/16" JAMBS.
C	Fixed OCTAGON Window; WOOD ULTREX	2'-8 1/2"	2'-8 1/2"	1	Tempered Glass, Single Lite. 6 9/16" JAMBS.
D	Double Hung w/ Transom Window; WOOD ULTREX, ITDH3264 & ITDHR3216	2'-8 1/2"	6'-8 1/2"	10	Egrees Window. (2) Units w/ Tempered & Obscured Glass at Double Hungs. (1) Unit w/ Obscured Glass at Double Hungs. Clear Glass at all Transoms, Single Lites. 6 9/16" JAMBS.
E	Double Hung Window; WOOD ULTREX, ITDH3248	2'-8 1/2"	4'-0 1/2"	10	Clear Glass & Single Lites. (3) w/ 4 9/16" JAMBS, (6) w/ 6 9/16" JAMBS

GENERAL WINDOW NOTES:
1. Install all window units as per manufacturer's specifications.
2. CONFIRM FRAMING DIMENSIONS FOR ALL WINDOWS PRIOR TO ORDERING.
3. All windows to meet egress requirements where required by code. REFER WINDOW REPRESENTATIVE.
4. Provide tempered glass where required by code. REFER WINDOW REPRESENTATIVE.
5. All 'WOOD ULTREX' Windows to be BARE WOOD Interior & BRONZE FIBERGLASS Exterior.
6. All 'ALL ULTREX' Windows to be Standard WHITE FIBERGLASS Interior & BRONZE FIBERGLASS Exterior.
7. All window hardware to be Standard OIL RUBBED BRONZE.
8. All windows to have Low-E, Insulated Glazing.
10. All windows to be ordered w/ BRONZE FINISH Aluminum Screens.

FLOOR PLAN LEGEND	
	EXISTING 2x4 FRAMED WALL TO REMAIN
	EXISTING 2x4 FRAMED WALL TO BE DEMOLISHED
	NEW 2x4 FRAMED WALL
	NEW 2x6 FRAMED WALL

