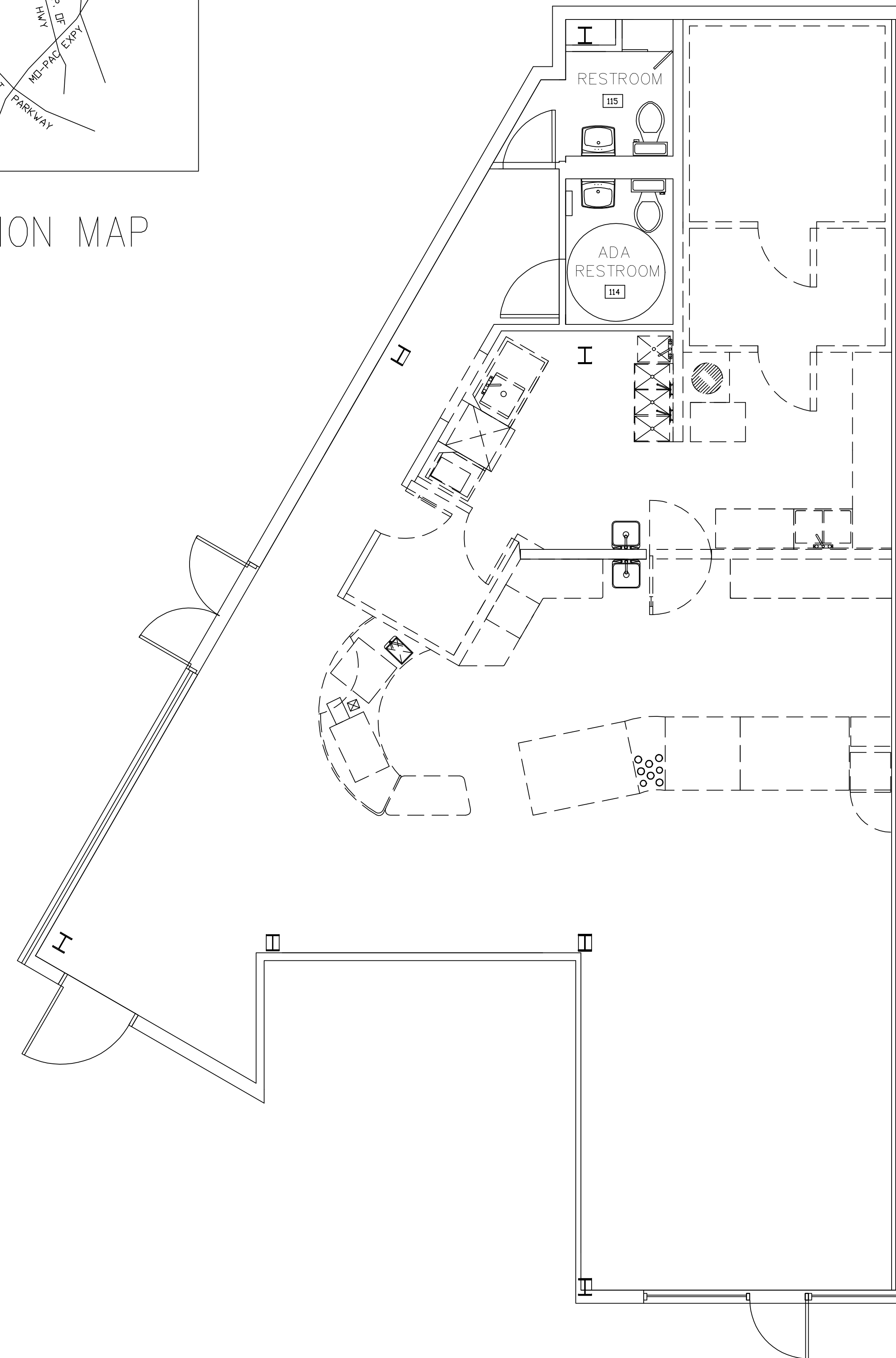


LOCATION MAP



**FINISH SCHEDULE - LONE STAR EYE, PLLC.**

ROOM #	ROOM NAME	FLOOR	BASE	WALLS	CEILING	CEILING HEIGHT	REMARKS
				NORTH SOUTH EAST WEST			
101	WAITING AREA	CT-1	VB-1	PT-1 SF/PT-1	PT-1	PT-1	EXP-1 EXISTING
102	RECEPTION	CT-1	VB-1	PT-1 SF/PT-1	PT-1	PT-1	EXP-1 EXISTING
103	RECORDS OFFICE	CT-1	VB-1	PT-1	PT-1	PT-1	GWB-1 9'-6" ---
104	EXAM ROOM # 1	CT-1	VB-1	PT-1	PT-1	PT-1	GWB-1 9'-6" ---
105	EXAM ROOM # 2	CT-1	VB-1	PT-1	PT-1	PT-1	GWB-1 9'-6" ---
106	FILES AREA	CT-1	VB-1	PT-1	PT-1	PT-1	ACP-1 9'-6" ---
107	PRIVATE OFFICE	CT-1	VB-1	PT-1	PT-1	PT-1	ACP-1 9'-6" ---
108	CORRIDOR # 1	CT-1	VB-1	PT-1	PT-1	SF/PT-1	EXP-1 EXISTING
109	SHOWROOM	CT-1	VB-1	PT-1	PT-1	SF/PT-1	EXP-1 EXISTING
110	CORRIDOR #2	CT-1	VB-1	PT-1	PT-1	SF/PT-1	EXP-1 EXISTING
111	PRELIM. TESTING EQUIPMENT	CT-1	VB-1	PT-1	PT-1	PT-1	ACP-1 9'-6" ---
112	SPECIALTY TESTING EQUIPMENT	CT-1	VB-1	PT-1	PT-1	PT-1	ACP-1 9'-6" ---
113	CONTACT LENS FITTINGS	CT-1	VB-1	PT-1	PT-1	PT-1	ACP-1 9'-6" ---
114	UNISEX ADA RESTROOM	CT-1	CR-1	CR-1/PT-1	CR-1/PT-1	CR-1/PT-1	EXISTING EXISTING PAINT EXISTING CEILING.
115	UNISEX RESTROOM	CT-1	CR-1	CR-1/PT-1	CR-1/PT-1	CR-1/PT-1	EXISTING EXISTING PAINT EXISTING CEILING.

**FINISH SCHEDULE - TYPICAL ITEMS**

	DESCRIPTION	REMARKS
FLOOR		
PT-1	EXPOSED CONCRETE - SEALED	2 CT. SW ARMORSEAL WATER BASED, B90 SERIES.
BASE		
CR-1	CERAMIC TILE	EXISTING CERAMIC TILE WAINSCOT
VB-1	VINYL BASE	JOHNSONITE VINYL 1/8", 40 - BLACK.(COLOR MATCH)
CEILING		
ACP-1	ACOUSTICAL LAY-IN TYPE 1	ARMSTRONG, FINE FISSURED CEREMAGUARD, OR EQUAL.
GWB-1	GYP SUM BOARD, PAINTED COLOR #1	BENJAMIN MOORE, 1(SELECTION BY OWNER)
EXP-1	EXPOSED STRUCTURE	NOT PAINTED
WALLS		
CR-1	CERAMIC TILE	EXISTING CERAMIC TILE WAINSCOT
PT-1	GWB, PAINTED COLOR # 1	BENJAMIN MOORE, 1(SELECTION BY OWNER)
SFS	STORE FRONT SYSTEM	EXISTING STORE FRONT SYSTEM

**FINISH SCHEDULE - OTHER ITEMS**

DF	DOOR FRAMES	TIMELY, BLACK (SC103).
DR	DOORS	PLAIN SLICED CHERRY
CTOPR	COUNTER TOPS	FORMICA BY WILSONART, SELECTION BY OWNER.
STNVEN	STONE VENEER	LIMESTONE VENEER ON RECEPTION DESK.

**DOOR SCHEDULE**

DOOR #	ROOM NAME	TYPE	WIDTH	HEIGHT	REMARKS
101AE	WAITING AREA	SF	3'-0"	7'-0"	EXISTING
103A	RECORDS OFFICE	HCWD	3'-0"	7'-0"	KEY LOCK, HM FRAME
104A	EXAM ROOM #1	HCWD	3'-0"	7'-0"	KEY LOCK, HM FRAME
105A	EXAM ROOM #2	HCWD	3'-0"	7'-0"	KEY LOCK, HM FRAME
107A	PRIVATE OFFICE	HCWD	3'-0"	7'-0"	KEY LOCK, HM FRAME
109AE	SHOWROOM	SF	3'-0"	7'-0"	EXISTING
110AE	CORRIDOR #2	SF	2'-3'-0"	7'-0"	EXISTING
114AE	ADA RESTROOM	HCWD	3'-0"	7'-0"	EXISTING
115AE	RESTROOM	HCWD	3'-0"	7'-0"	EXISTING

**INDEX OF DRAWINGS**  
SHEET# DRAWING NAME

- A-101 EXISTG. & DEMOLITION FLOOR PLAN
- A-102 FLOOR PLAN & INTERIOR ELEVATIONS
- A-103 REFLECTED CEILING PLAN
- A-104 WALL/ DOOR TYPES & DETAILS
- MEP-101 MECH. ELEC. PLUMB. DEMOLITION
- M-101 MECHANICAL FLOOR PLAN
- M-201 MECHANICAL SCHEDULE & NOTES
- M-202 MECHANICAL DETAILS
- E-101 LIGHTING FLOOR PLAN
- E-102 POWER FLOOR PLAN
- E-201 ELECTRICAL SCHEDULE & NOTES
- P-101 PLUMBING FLOOR PLAN

**GENERAL NOTES TO FLOOR PLANS**

- IF ANY DISCREPANCIES, ERRORS, OR OMISSIONS ARE FOUND IN THE DOCUMENTS REPORT THEM IMMEDIATELY TO OWNER FOR A CLARIFICATION. REPORT ANY DISCREPANCIES, ERRORS, OR OMISSIONS PRIOR TO ORDERING OF MATERIALS OR COMMENCEMENT OF CONSTRUCTION.
- ANY AND ALL DIMENSIONS ARE TO BE VERIFIED AT THE JOB SITE.
- ALL DIMENSIONS GIVEN ARE TO FRAME, NOT TO FINISH, UNLESS NOTED OTHERWISE.
- DO NOT SCALE DIMENSIONS FROM DRAWINGS. ANY CRITICAL DIMENSION NOT GIVEN SHALL BE BROUGHT TO THE ATTENTION OF OWNER.
- TORTILLA FACTORY LAYOUT HAS BEEN DEVELOPED WITH WALLS AND EXISTING COLUMNS, AS PER DWGS. PROVIDED BY BLDG TENANT, IF CONDITIONS CHANGE, SO WILL DWGS.
- ALIGN ADJACENT DOORS AND WINDOWS SO THAT THEIR TRIM ALIGNS.
- VERIFY ACTUAL ROUGH OPENING REQUIREMENTS WITH WINDOW AND DOOR MANUFACTURERS.
- NOT USED

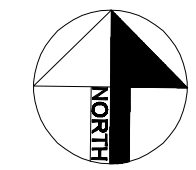
**WALL LEGEND**

	EXISTING CONSTRUCTION TO REMAIN
	DEMOLISH EXISTING CONSTRUCTION
	NEW WALL

**SYMBOL LEGEND**

	KEYNOTE CALL-OUT
	ROOM NUMBER
	DOOR NUMBER
	WINDOW TYPE
	INTERIOR ELEV.
	L.T. GAUGE METAL FRAMING

**1 DEMOLITION PLAN**  
SCALE: 1/4" = 1' - 0"



Issued  
09/13/10

Revised  
09/13/10

LONE STAR EYE, PLLC  
2700 BARTON CREEK BLVD, SUITE 101  
AUSTIN, TEXAS, 78735

DESIGNED: P. A. S.  
CHECKED: FER  
DATE: 09/13/10

APPROVED: P. A. S.  
DATE: 09/13/10

DRAWN BY: PAS  
SCALE: 1/4"=1'-0"

FRANK E. RASCOE, AIA  
211 WEST GRAMERCY PL.  
SAN ANTONIO, TX, 78212  
PH: 210-385-6319

LIMITED SERVICES CONTRACT:  
THESE DRAWINGS WERE PREPARED UNDER A LIMITED SERVICES CONTRACT. THE CLIENT HAS AGREED TO PAY FOR THE SERVICES OF A REGISTERED PROFESSIONAL ENGINEER.

©2010 P. A. S. Design, Inc  
/Frank E. Rascoe, AIA  
All Rights Reserved.  
These designs/drawings are the sole property of P. A. S. Design, Inc.  
/Frank E. Rascoe, AIA and may not be reproduced in any form, by any method, for any purpose without previous written permission from P. A. S. Design, Inc.  
/Frank E. Rascoe, AIA

